

FASHION AND DESIGN INSTITUTE

Network and Browser Setting Manual

Version 1.0

PURPOSE

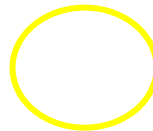
Internet access is provided for student and visitor's access, however, whoever who need to use the WIFI access, has to abide to the Internet Policy Usage of Fashion and Design Institute (FDI).

The purpose is to describe the different settings needed to access the internet using the WIFI network of Fashion and Design Institute (FDI).

SCOPE OF MANUAL

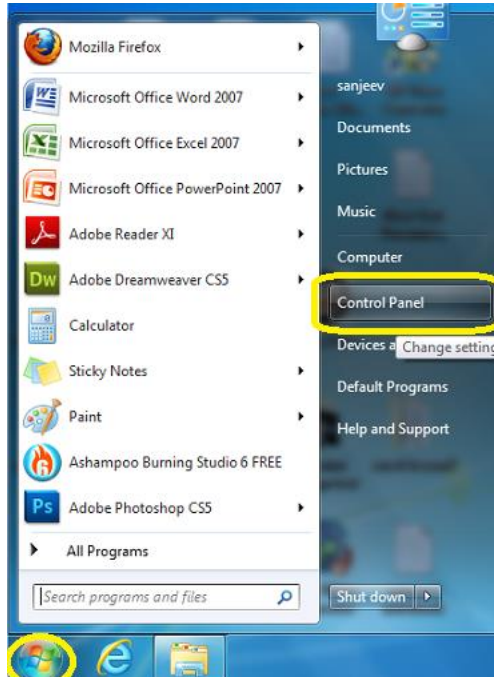
- Settings requirement for network card
- Settings requirement for browser
 - Internet Explorer/Google Chrome
 - Mozilla Firefox

Area denoted with a surrounding such as below identify 'point of attention'.



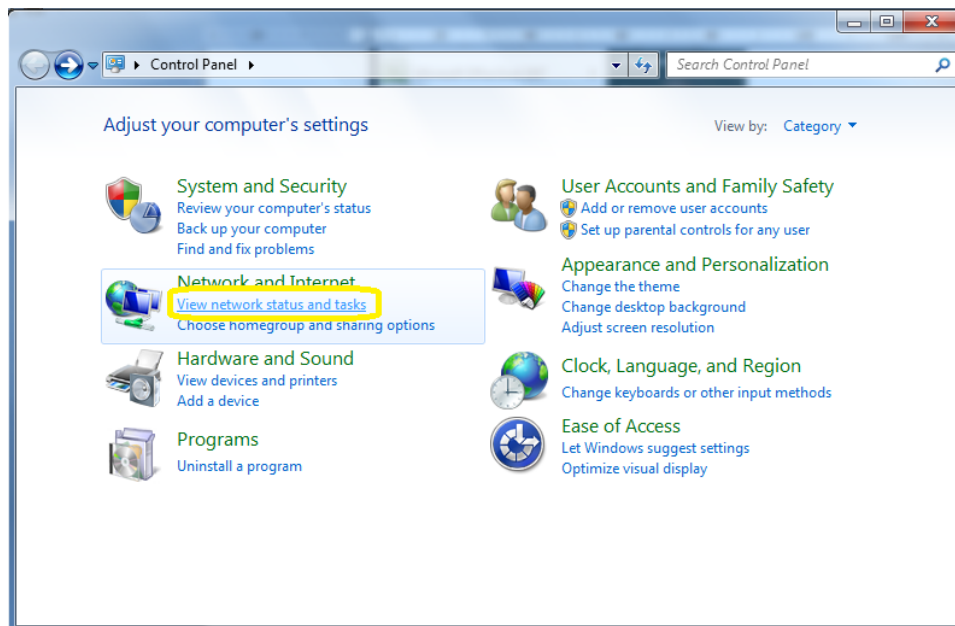
Settings requirement for network– Windows 7/Vista

1. Click on windows button  below left.
(i) Click on **Control Panel**.

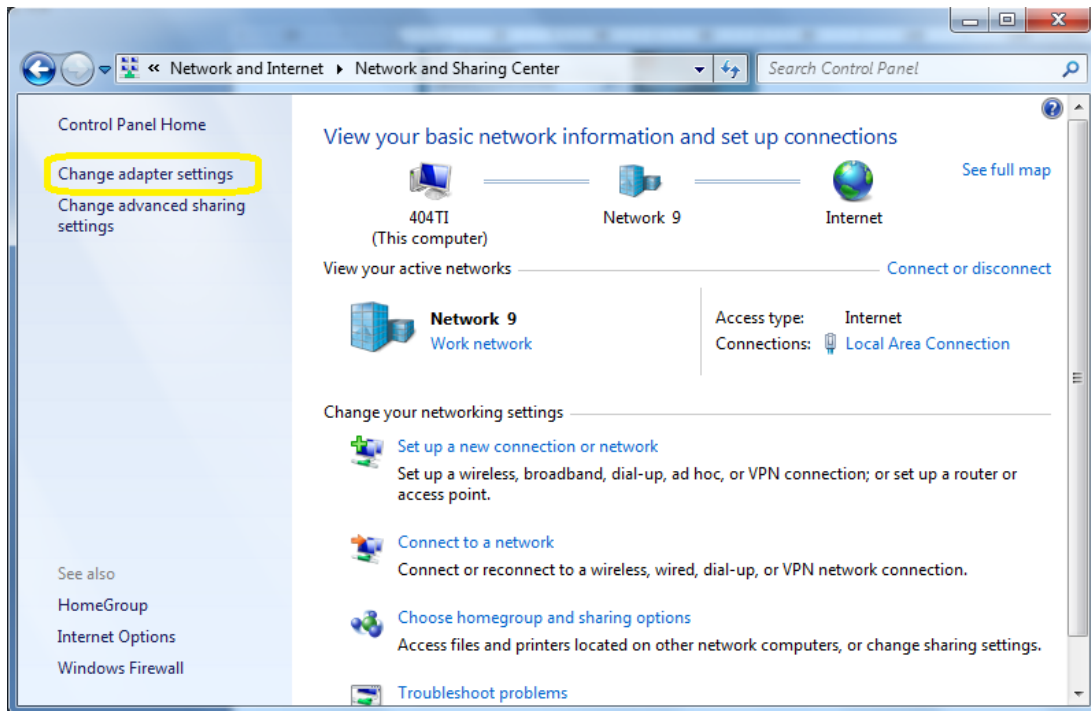


2. The below dialog box appears
(i) Under **Network and Internet**, click on **View network status and tasks**.

3.



3. The below dialog box appears.
(i) Click on **Change adapter settings**.



4. The below dialog box appears- Figure 1
(i) Right Click on **Local Area Connection**- Figure 2
(ii) Click on **Properties**

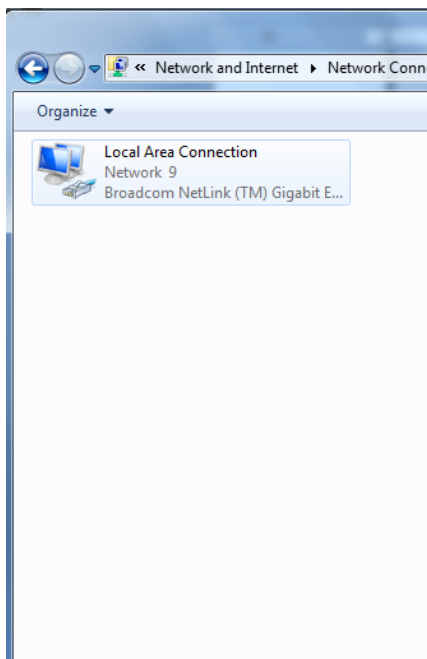


Figure: 1

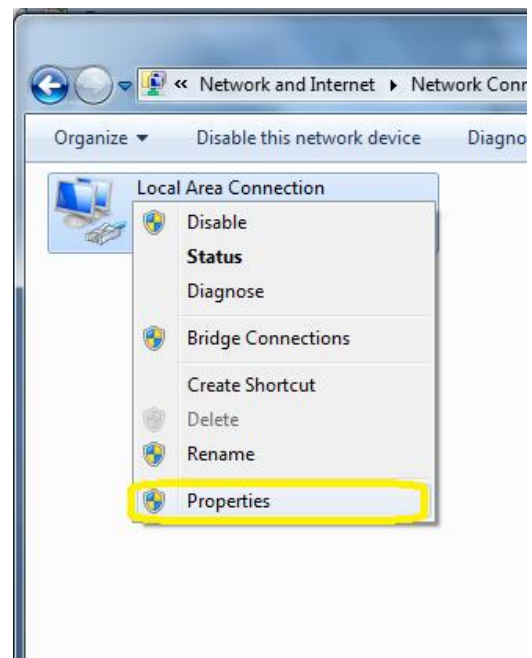
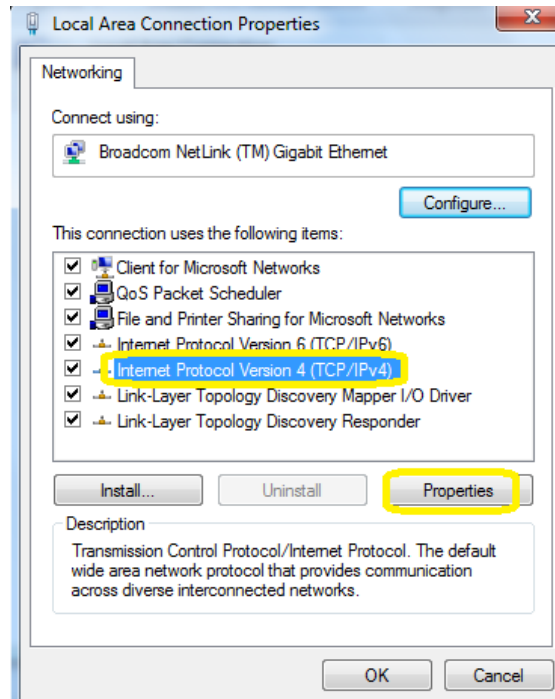


Figure: 2

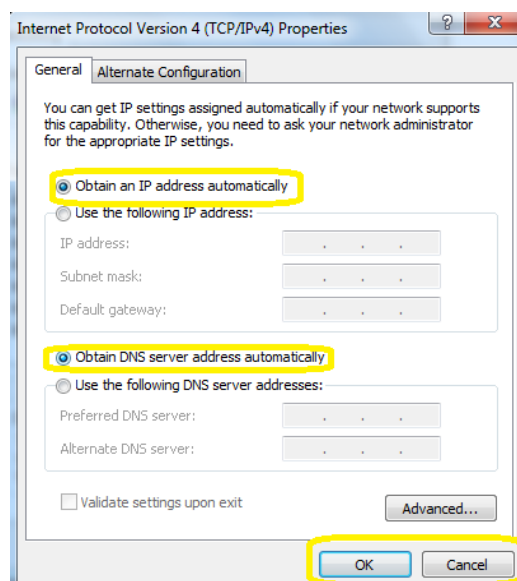
5. The below dialog box appears.

- (i) Click on **Internet Protocol Version 4 (TCP/IPv4)**
- (ii) Click on **Properties**



6. The below dialog box appears

- (i) Check (✓) **Obtain an IP address automatically**
- (ii) Check (✓) **Obtain DNS server address automatically**
- (iii) Click **OK**
- (iv) Then, close all opened windows/dialog box.



Settings requirement for browser

Internet Explorer/ Google Chrome

1. Open Internet Explorer
2. On the **Tools** menu in Internet Explorer, click **Internet Options**.
(Figure 1 or Figure 2)

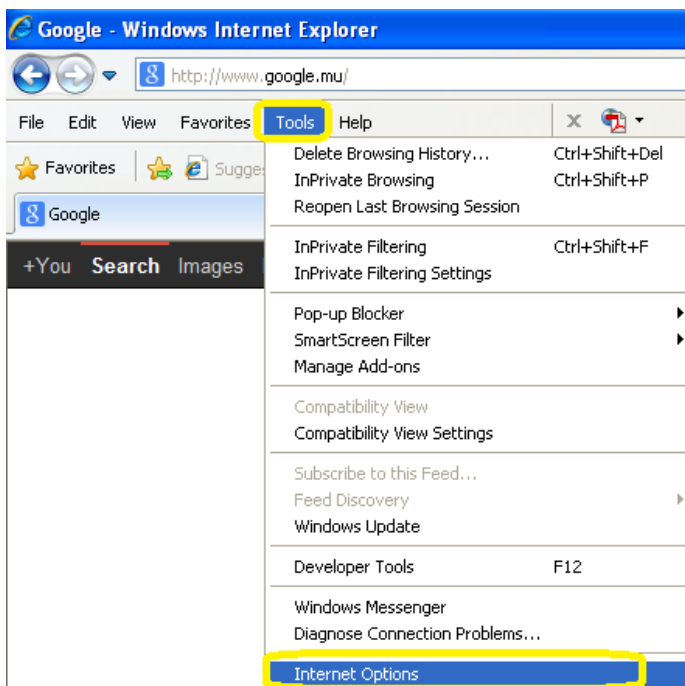


Figure: 1

OR

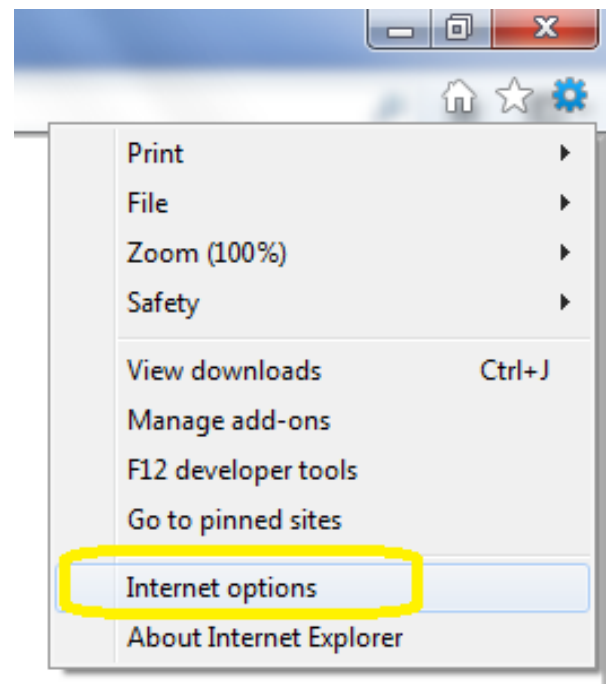
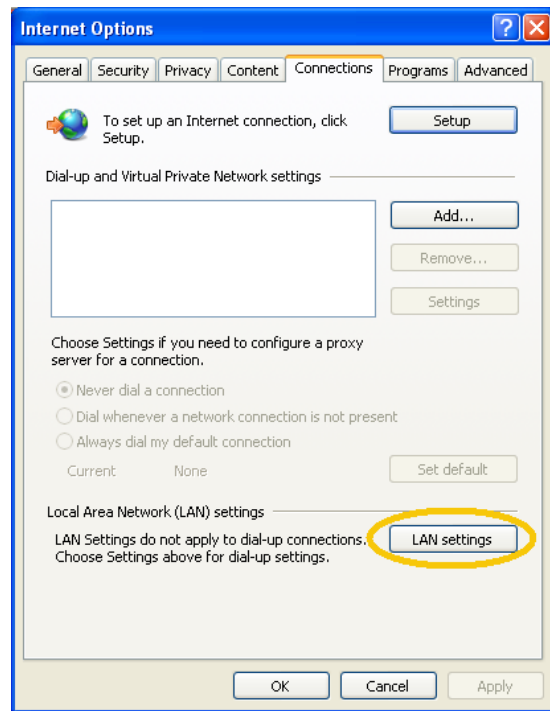
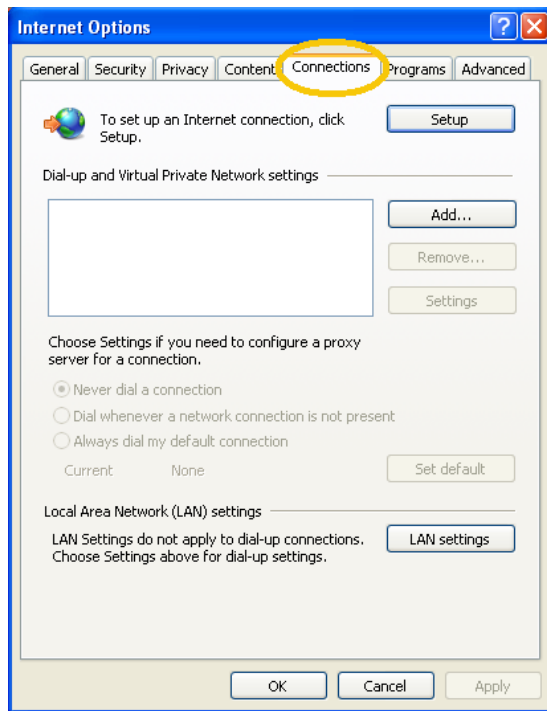
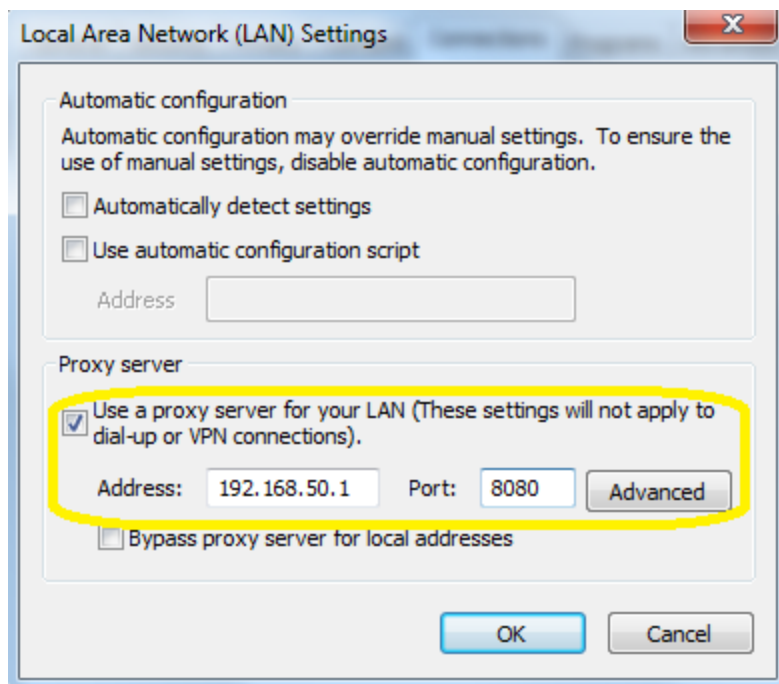


Figure: 2

3. Click the **Connections** tab, and then click **LAN Settings**.

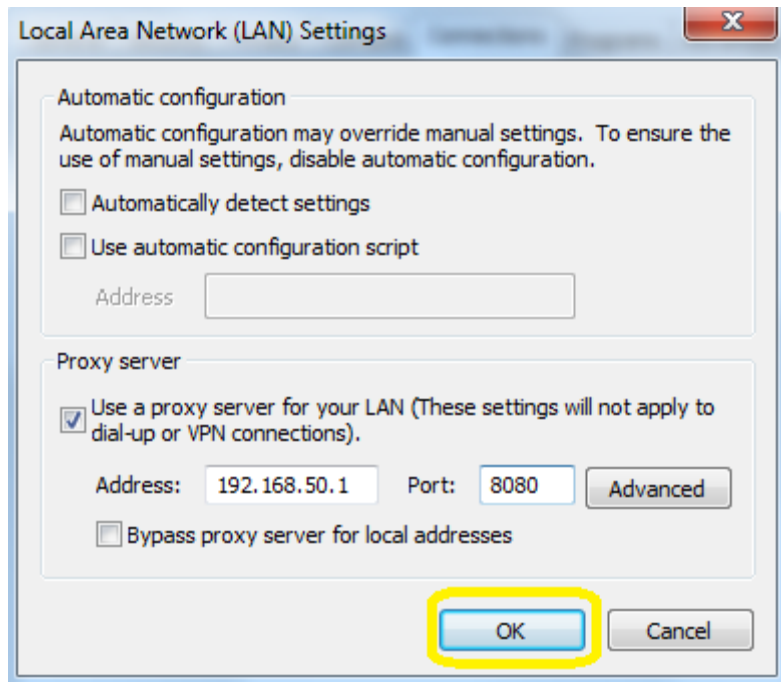


4. Click **Use a proxy server for your LAN** as shown in below picture. Leave other check box empty. Enter 192.168.50.1 in **Address** textbox and 8080 in **Port** textbox

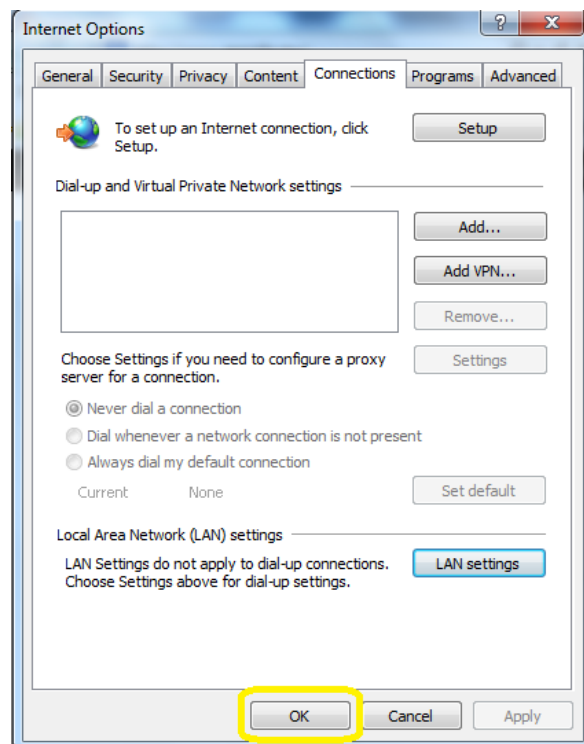


Important Note: Leave all other check box UN TICK

5. Click **OK** to close the **LAN Settings** dialog box.



6. Click **OK** again to close the **Internet Options** dialog box and setting saved.

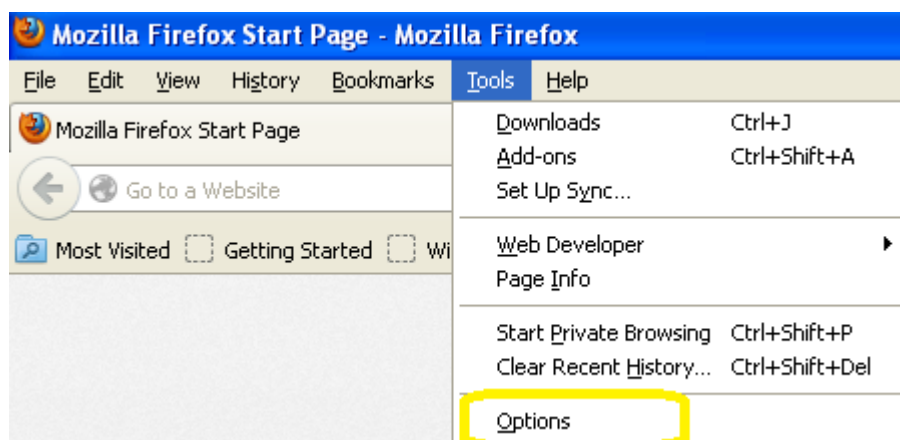


7. Close your Internet Explorer and open again.
8. You will be prompted to enter username and password.

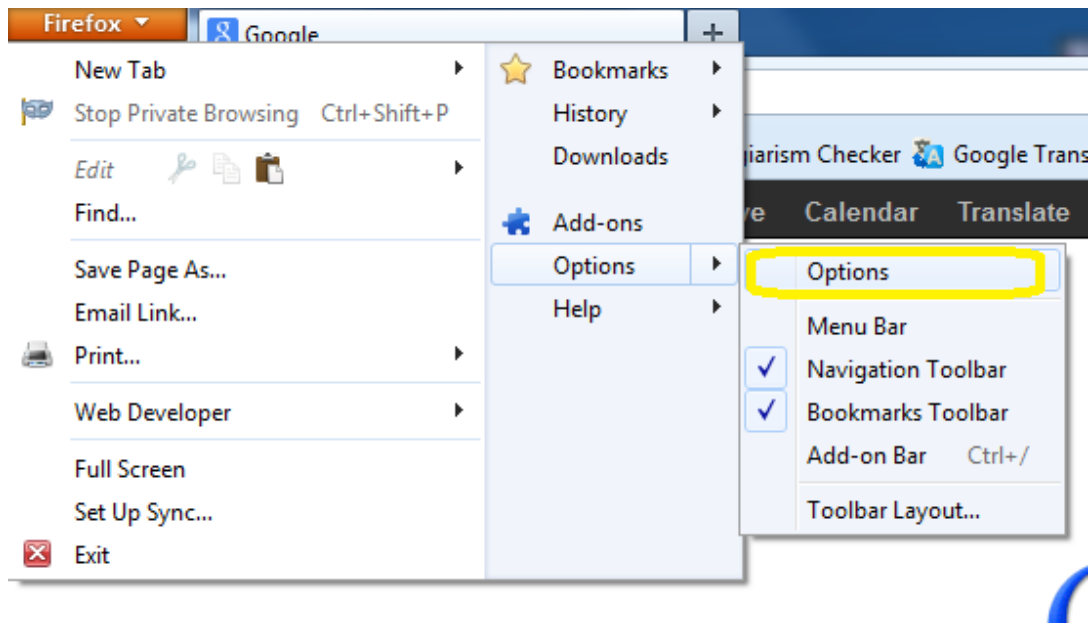
Enter username and password provided to you for internet access.
9. Note that you will not be required to enter username and password again as long as your Internet Explorer browser remains open. Once closed and opened again, username and password will need to be entered again.
10. You should be able to access the internet using your Internet Explorer after completing successfully the above steps.
11. Should you need further assistance to configure your laptop, request same from the IT Section.

Mozilla Firefox

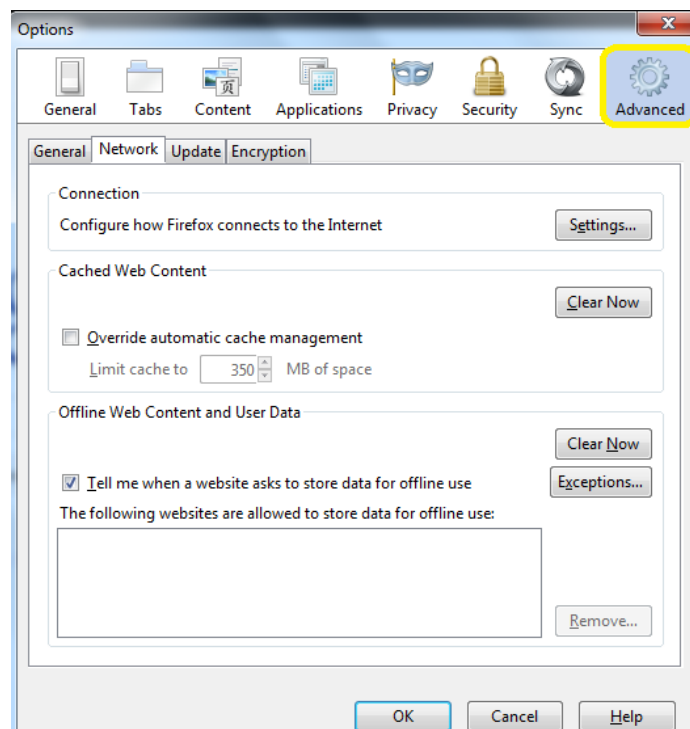
1. Open Mozilla Firefox.
2. Right click on the shortcut in **Start Menu** and select **Mozilla Firefox**. Choose on the **Tools** menu, and click on **Options**.



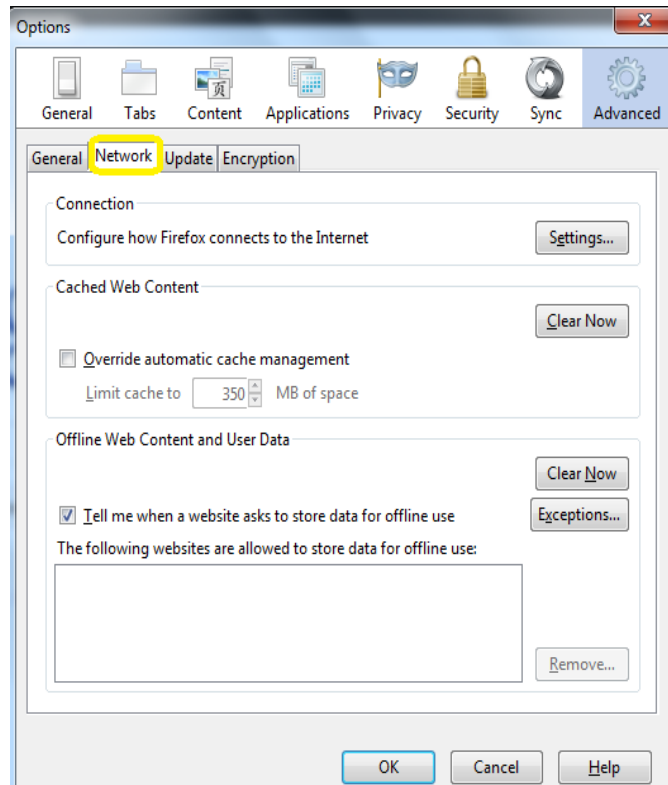
OR



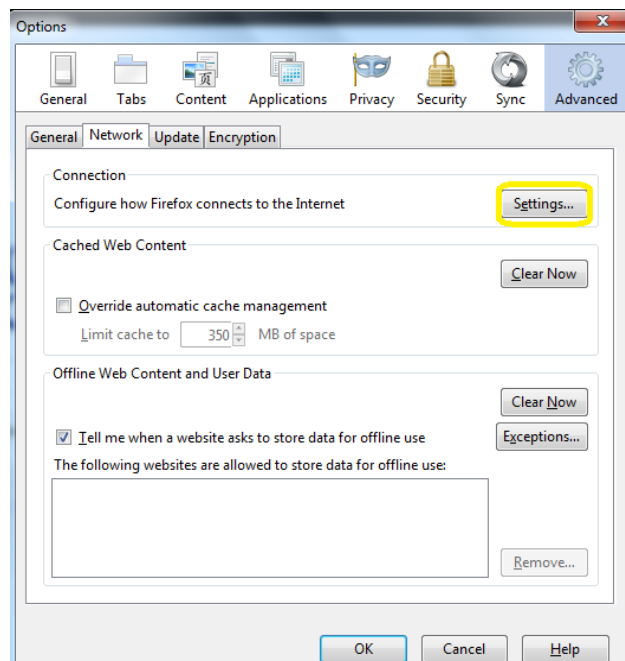
3. Click **Advanced** tab at the top of the "Options" dialog box.



4. Click **Network** tab in the "Options" dialog box.

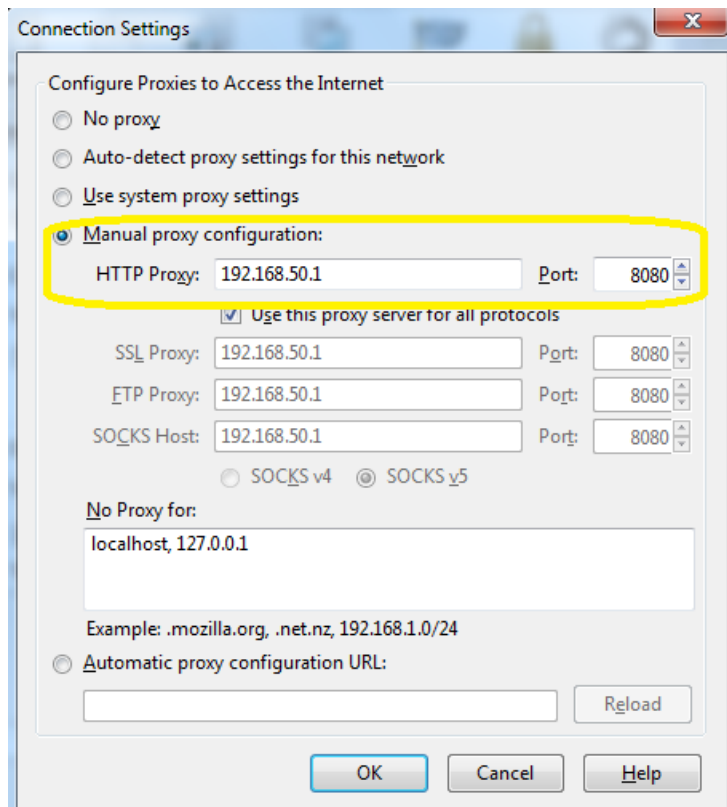


5. Click the **Settings** in the "Options" dialog box.

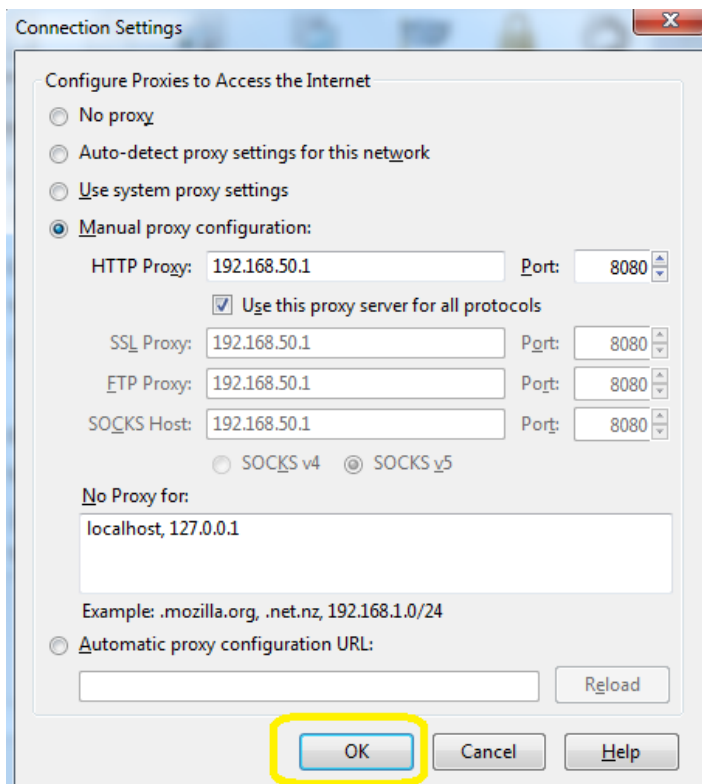


12. Click **Manual proxy configuration** as shown in below picture.
Leave other check box empty.

Enter 192.168.50.1 in textbox **HTTP Proxy** and 8080 in textbox **Port**

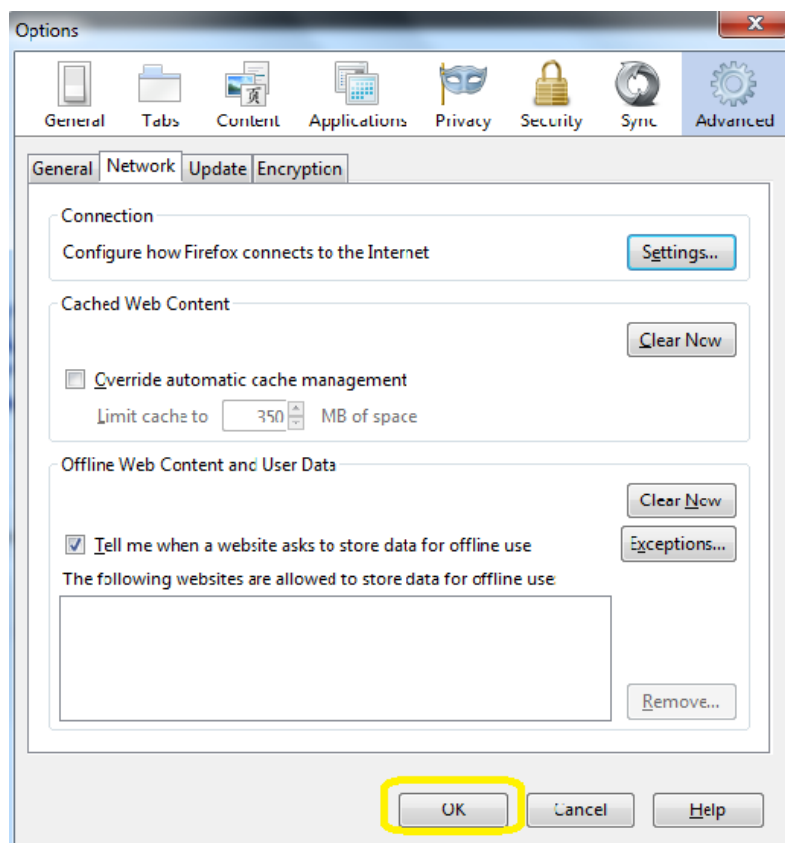


6. Click **OK** to save the setting.



7. The following dialog box appears.

(i) Click **OK** to save setting and exit.



- 1) Close your Internet Explorer and open again
- 2) You will be prompted to enter username and password. Enter username and password provided to you for internet access.
- 3) Note that you will not be required to enter username and password again as long as your Internet Explorer browser remains open. Once closed and opened again, username and password will need to be entered again.
- 4) You should be able to access the internet using your Internet Explorer after completing successfully the above steps.
- 5) Should you need further assistance to configure your laptop, request same from the IT Section.

Settings requirement for network– Mobile

Note: For mobile device setting the following proxy server setting applies

Proxy: 192.168.50.1

Port: 8080

Student need to find configuration to input the proxy setting on their mobile device (browsing on the internet would be helpful)

Should you need further assistance to configure your device, request same from the IT Section.

Note : This manual version may be updated as and when required without prior notice. Latest version of the document should be used. It is the responsibility of the user to keep update with the latest version available